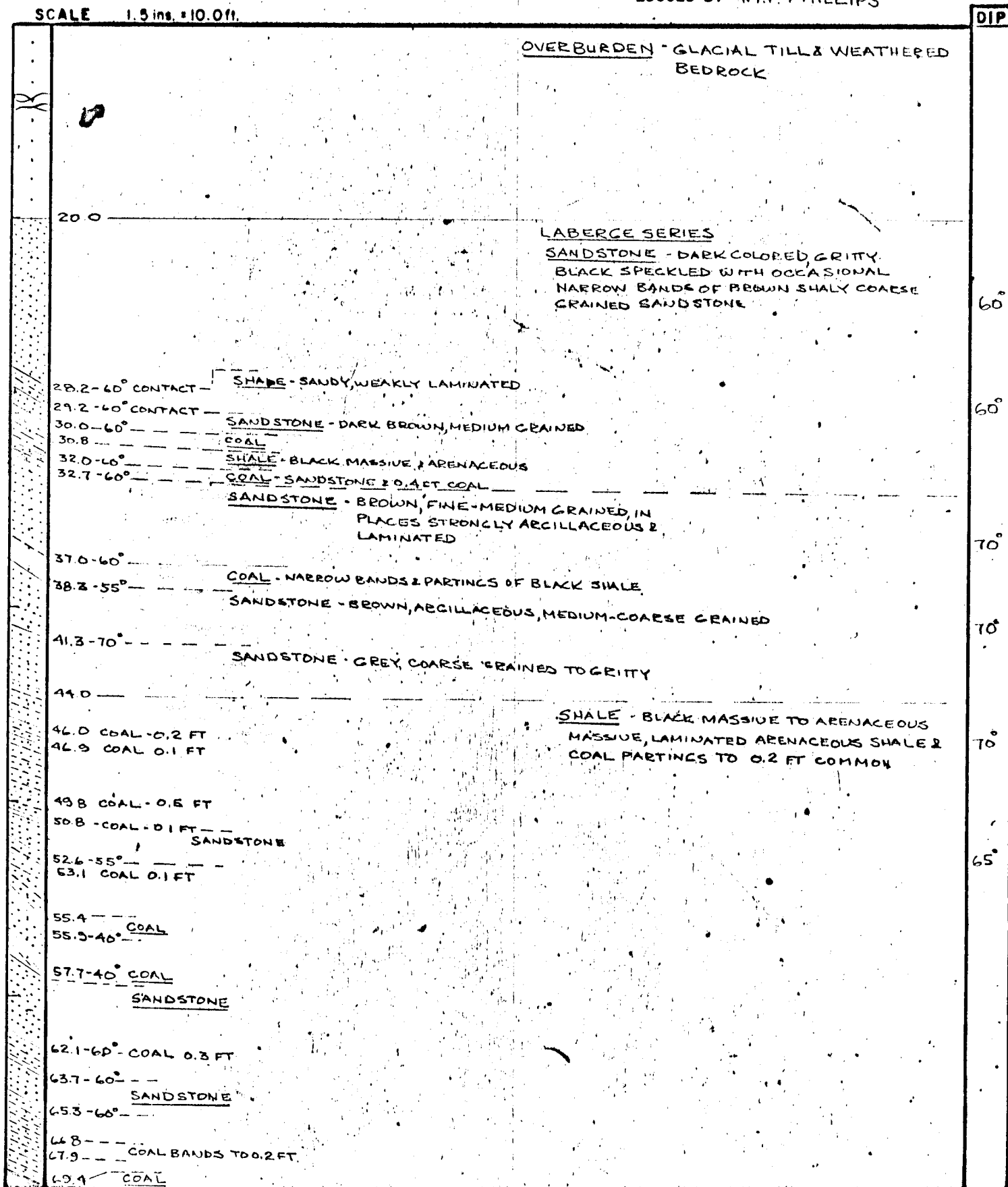


DRILL HOLE LOG
ARJAY KIRKER RESOURCES LTD.
NORDENSKIOLD COAL AREA

COORDINATES 22,321,290.80N; -191,208.83E
ELEVATION 24577
DIP -50°
AZIMUTH 040°
SCALE 1.5 ins. = 10.0 ft.

CORE SIZE HQ 0-434.0 FT NQ 434-1205 FT
HOLE STARTED 29 SEPTEMBER, 1972
HOLE COMPLETED 13 OCTOBER, 1972
LOGGED BY M.P. PHILLIPS



DRILL HOLE LOG

ARJAY KIRKER RESOURCES LTD
DIVISION MOUNTAIN COAL PROSPECT

COORDINATES:

DIP:

HOLE NO 5
PAGE 2 OF 17

		DIP
70.5	COAL	
71.5 - 70°	CONTACT - SANDSTONE	15°
75.2 - 75°	CONTACT - COAL - 0.2 FT. DULL, SANDY	
75.8	COAL - DULL SANDY	
77.0	SHALE - BLACK - COAL PARTINGS	75°
78.4 - 75°	CONTACT - COAL - DULL BLACK, PARTINGS & BANDS OF BLACK SHALE	
80.8 - 75°	CONTACT	
81.5 - COAL - 0.2 FT.	SANDSTONE - DARK, X-BEDDED, LAMINATED ARGILLACEOUS, FINE GRAINED SANDSTONE	70°
85.0 - 70°	CONTACT - SANDSTONE - LIGHT GREY, COARSE GRAINED - GRIMY, FELDSPATHIC SANDSTONE. FINE PARTINGS OF ARENACEOUS SHALE	65°
101.3	SHALE PARTINGS & FINE SHALE PARTICLES IN SANDSTONE	70°
104.2 - 60°	CONTACT - COAL PARTING SANDSTONE - SHALE PARTICLES IN SANDSTONE COMMON	70°
106.0 - 60°	SHALE - INDURATED	
106.7 - 45° - 70°	CHILLED CONTACT - ANDESITE - PALE GREEN ANDERITE WITH ALTERED CHLORITE & FELDSPAR PHENOCRYSTS. VENOLITH TO 0.2 FT. SHALE CONTACTS PARALLEL TO BEDDING	
109.2 - 70°	CHILLED CONTACT - COAL	
110.6 - 70°	SANDSTONE - GREY TO BROWN, CLEAN TO ARGILLACEOUS MEDIUM-COARSE GRAINED, OCCASIONAL BANDS OF BLACK SPECKLING	70°
113.0 - 75°	SHALE - BLACK MASSIVE	
114.0	SANDSTONE	
114.5	COAL - DULL BLACK	
116.5	SHALE - ARENACEOUS WEAKLY LAMINATED	
117.0	SANDSTONE - DARK, BLACK SHALE SPECKLING	
118.3 - 60°	CONTACT	
118.9 - 70°	CHILL CONTACT - PARALLEL BEDDING - HUTSHI GROUP - ANDESITE	
121.3 - 70°	CHILLED CONTACT PARALLEL BEDDING	
122.3	LOST	
123.0 - 70°	CHILLED SHALE	
123.5 - 40°	SHALE	
125.4 - 40°	CHILLED CONTACT - SHALE - BLACK MASSIVE SHALE, PARTINGS OF COAL COMMON, AND NARROW BANDS OF LIGHT COLORED, ARENACEOUS	65°
128.2	COAL	
128.9	COAL	

DRILL HOLE LOG

ARJAY KIRKER RESOURCES LTD
DIVISION MOUNTAIN COAL PROSPECT

COORDINATES:

DIP:

HOLE NO 5
 PAGE 3 OF 17

LABERGE SERIES - SHALE

DIP

60°

60°

70°

70°

65°

70°

65°

70°

65°

60°

132.5 - COAL
 133.0 -

136.3 - COAL
 137.4 -

139.1 - SHALE - LAMINATED, ARGILLACEOUS

141.0 - SANDSTONE WITH NARROW BANDS OF BLACK SHALE

142.0 - BLACK SHALE & SANDSTONE WITH 0.4 FT COAL

143.3 -

145.5 - 60° CHILLED CONTACT PARALLEL TO BEDDING
 ANDESITE - BLEACHED

SANDSTONE - MEDIUM GREY, MEDIUM
 TO COARSE GRAINED WITH SHALE
 FRAGMENTS & PARTINGS OF ARGILLACEOUS
 MATERIAL

148.6 - 60°

149.8 - 60°

SHALE - BLACK MASSIVE SHALE

152.1 - COAL

153.0 -

154.0 - 70°

SANDSTONE - DARK GREY, COARSE
 GRAINED TO GRITTY ARGILLACEOUS
 CROSS-BEDDED SANDSTONE

159.0 - 60° COAL
 159.8 -

164.3 - 65°

SHALE - LAMINATED & CROSS BEDDED
 ARGILLACEOUS SHALE WITH BANDS OF
 BLACK SHALE WITH PARTINGS AND
 BANDS UP TO 0.2 FT OF COAL

171.5

COAL - PARTINGS & BANDS OF
 BLACK SHALE

174.0 -

176.5 - 65°

SANDSTONE - LIGHT GREY GRITTY
 SANDSTONE

182.2 - 80°

SHALE - BLACK, MASSIVE SHALE WITH
 PARTING AND BANDS UP TO 0.4 FT OF
 COAL

186.3 - 60°

187.3 - 0.6 FT COAL

SANDSTONE - LIGHT TO DARK GREY
 MEDIUM - COARSE GRAINED SANDSTONE
 WITH ARGILLACEOUS AND SHALE BANDS

DRILL HOLE LOG

ARJAY KIRKER RESOURCES LTD
DIVISION MOUNTAIN COAL PROSPECT

COORDINATES

DIP

HOLE NO 5
 PAGE 4 OF 17

		LABERGE SERIES - SANDSTONE	DIP
191.3 - 40°	COAL		40°
192.6			
194.4 - 40°			30°
	SHALE - BLACK MASSIVE WITH OCCASIONAL ARENACEOUS PARTINGS - BEDDING 0-30°		
197.0			
	SANDSTONE & SHALE - INTERBEDDED & INTERLAMINATED - BEDDING 0-30°		
198.5			
	SHALE - BLACK MASSIVE		
203.0 - GRADATIONAL			
	SHALE - DULL DARK GREY, ARENACEOUS WEAKLY LAMINATED SHALE BEDDING 0-20°		
212.0			
	SHALE - BLACK MASSIVE WITH 0.1 FT. COAL PARTING ON BOTTOM CONTACT		
213.4 - 50°			50°
214.8 - COAL - 0.4 FT	SANDSTONE - IN PARTS ARGILLACEOUS WITH NARROW BANDS OF SHALE		
216.8			35°
	SANDSTONE - ARENACEOUS SHALE GRAD CHANGE TO DARK, FINE GRAINED ARGILLACEOUS SANDSTONE		
222.0 - 35°			10°
	SHALE - DARK GREY, MODERATELY ARENACEOUS WEAKLY LAMINATED		
224.0 - 20°			
	SANDSTONE - LIGHT GREY IN PARTS WEAKLY ARGILLACEOUS WITH PARTINGS OF COAL		
228.5 - 10°			
	SHALE - BLACK MASSIVE TO ARENACEOUS WEAKLY LAMINATED		
232.0 - 10°			
	SANDSTONE - DARK GREY, STRONGLY ARGILLACEOUS		
234.9 - 10-20°			
235.8	COAL - PARTINGS & BANDS OF BLACK SHALE		
	SHALE - BLACK MASSIVE		
237.0			
	COAL - 30° - BANDS OF BLACK SHALE COMMON		
238.0			25°
	SHALE - INTERLAMINATED STRONGLY ARENACEOUS SHALE & BLACK MASSIVE SHALE		
246.0			
	SHALE - BLACK MASSIVE - STRONG SLICKENSIDED FRACTURES & BEDDING PLANES		

DRILL HOLE LOG

ARJAY KIRKER RESOURCES LTD
DIVISION MOUNTAIN COAL PROSPECT

COORDINATES:

DIP:

HOLE NO 5
 PAGE 3 OF 17

			DIP
250.2	SHALE - BLACK MASSIVE WITH QUARTZ GRAINS	LABERGE SERIES	
251.2	SHALE - FAULT?	SANDSTONE - LIGHT TO MEDIUM GREY, COARSE GRAINED TO GRITTY, WEAK TO BANDS STRONGLY ARGILLACEOUS SANDSTONE	
252.0	SANDSTONE - CRUMBLY		
	IN PART CRUMBLY - WEATHERED - FAULT ZONE?		
255.0			65°
263.6	SHALE - DARK DULL GREY, LAMINATED ARENACEOUS SHALE WITH OCCASIONAL UP TO 0.3 FT BLACK MASSIVE SHALE BANDS		60°
272.5	COAL - 0.5 FT - PARTING OF SHALE		50°
	SANDSTONE - COARSE GRAINED, WEAK TO STRONGLY ARGILLACEOUS		60°
274.0	SHALE - BLACK, MASSIVE, IN PARTS ARENACEOUS		60°
275.7	COAL - PARTING & BANDS OF BLACK SHALE		
277.0	SANDSTONE - IRREGULAR TO 0.3 FT ARGILLACEOUS BANDS AND OCCASIONAL UP TO 0.5 FT BANDS OF BLACK SHALE WITH BIT FRAGMENTS		
282.0	SHALE - DULL DARK GREY, WEAKLY LAMINATED ARENACEOUS OCCASIONAL NARROW BANDS BLACK MASSIVE SHALE		30°
287.0			60°
288.5	SHALE - ARENACEOUS, WEAKLY LAMINATED	SANDSTONE - GREY, MEDIUM GRAINED OCCASIONAL PARTINGS & NARROW BANDS OF BLACK SHALE & COAL	
290.0			
292.3	SHALE - ARENACEOUS, LAMINATED		
293.0			65°
295.4	SHALE - ARENACEOUS, LAMINATED		
296.1			
297.0	SHALE - ARENACEOUS, LAMINATED		30°
297.5			30°
299.4	SHALE - STRONGLY ARENACEOUS, LAMINATED		40°
304.5	SHALE - BLACK, MASSIVE, NUMEROUS SLICKENSIDES ALONG BEDDING(?)		30°
310.0			

DRILL HOLE LOG

ARJAY KIRKER RESOURCES LTD
DIVISION MOUNTAIN COAL PROSPECT

COORDINATES:

DIP:

HOLE NO 5
 PAGE 6 OF 17

		DIP
<u>LABERGE SERIES</u>		
	<u>SANDSTONE</u> - INTERBEDDED & BANDED GREY SANDSTONE, ARGILLACEOUS FINE - MEDIUM GRAINED SANDSTONE AND ARGILLACEOUS LAMINATED SHALE	46°
314.1 - CRABATIONAL -	<u>SANDSTONE</u> - GREY, CRITTY WITH BANDS TO 0.3 FT STRONGLY ARGILLACEOUS	55°
		50°
320.0 -	<u>COAL</u> - TWO 0.3 FT BANDS IN BLACK MASSIVE SHALE AND ARENACEOUS	
322.0 -	<u>LAMINATE SHALE</u>	
333.6	<u>SHALE</u> - BLACK, MASSIVE ARENACEOUS WITH SCATTERED CRITS	
	<u>SANDSTONE</u> - DARK GREY, MODERATELY ARGILLACEOUS	60°
327.3 - 30°	<u>SHALE</u> - ARENACEOUS - LAMINATED	50°
328.2 - 50°	<u>SHALE</u> - BLACK, MASSIVE	
329.8		
330.5 - 50°	<u>SHALE</u> - BLACK, MASSIVE, OCCASIONAL NARROW ARENACEOUS BANDS	
332.5	<u>SHALE</u> - ARENACEOUS, WEAK - MODERATELY LAMINATED	55°
337.0 -	<u>SHALE</u> - BLACK, MASSIVE, PARTINGS OF COAL	
337.6 -	<u>COAL</u> - DULL BLACK	
339.0 -		
	<u>SHALE</u> - BLACK, MASSIVE - PARTINGS OF SANDSTONE	
341.5 -	<u>COAL</u> - PARTING OF SHALE	40°
343.5 -	<u>SHALE</u> - ARENACEOUS, WEAKLY LAMINATED	
344.0 - 45°		
	<u>SANDSTONE</u> - GREY, COARSE GRAINED, PARTINGS OF ARENACEOUS SHALE	10°
347.6 -	<u>SHALE</u> - ARENACEOUS, LAMINATED, NARROW BANDS OF SANDSTONE TO 0.3' COMMON TOWARDS BOTTOM	50°
350.5 -	<u>SHALE</u> - ARENACEOUS, LAMINATED AND <u>SANDSTONE</u> INTERBEDDED	50°
353.3 -	<u>SANDSTONE</u> - GREY, COARSE GRAINED CRITTY	40°
357.7 - 45°	<u>SHALE</u> - BLACK, MINOR PARTINGS OF ARENACEOUS SHALE	35°
362.0	<u>COAL</u> - DULL, ARGILLACEOUS	
363.0 -	<u>SHALE</u> - ARENACEOUS, LAMINATED, X-BEDDED	35°
366.2	<u>SANDSTONE</u>	
367.2	<u>COAL</u> - 0.5 FT	

DRILL HOLE LOG

ARJAY KIRKER RESOURCES LTD
DIVISION MOUNTAIN COAL PROSPECT

COORDINATES :

DIP -

HOLE NO 5
PAGE 7 OF 17

		DIP
	<p><u>SHALE</u> - ARENACEOUS, LAMINATED, X-BEDDED OCCASIONAL BANDS UP TO 1 FT. BLACK MASSIVE AND ARENACEOUS MASSIVE</p>	40°
		0°
		20°
387.4	<u>SHALE</u> - BLACK, MASSIVE, SUCKER SIDES COMMON	
390.0	<u>SANDSTONE</u> - GREY, MEDIUM GRAINED, NARROW ARGILLACEOUS BANDS	35°
393.3	45° FAULT? - <u>SHALE</u> - SANDSTONE BRECCIA FRAGMENTS - 0.5 FT. WIDE ZONE	60°
	<u>SHALE</u> - BLACK MASSIVE, BROKEN, SUCKER SIDES COMMON OCCASIONAL DARK ARGILLACEOUS QUARTZITE BAND	
398.3	<u>SHALE & SANDSTONE</u> - INTERBEDDED, ARENACEOUS COARSE GRAINED SHALE AND SANDSTONE	9°
		20°
402.8	30° - <u>COAL</u> - DULL BLACK, OCCASIONAL PARTINGS OF SHALE AND ARENACEOUS SHALE	20°
405.3	<u>SANDSTONE</u> - 0-10°	
406.6		10°
410.2	10°? CONTACT - <u>SANDSTONE</u> - GREY, MEDIUM - COARSE GRAINED, OCCASIONAL PARTINGS OF COAL	10°
416.4	6-10° - <u>SHALE</u> - BLACK MASSIVE - HIGHLY BROKEN, 0.5 FT COAL UPPER CONTACT	
420.0	<u>FAULT ZONE?</u> - HIGHLY FRACTURED & BROKEN ROCK	
421.0	<u>SANDSTONE</u>	
424.0	<u>SHALE</u> - BLACK MASSIVE - HIGHLY BROKEN	

DRILL HOLE LOG

ARJAY KIRKER RESOURCES LTD
DIVISION MOUNTAIN COAL PROSPECT

COORDINATES

DIP

HOLE NO 6
PAGE 8 OF 17

CORE LOSS - 6 FT	LABERGE SERIES	DIP
432.0 SHALE - BLACK, MASSIVE		
434.5 - 30°	SANDSTONE - GREY, MEDIUM GRAINED, OCCASIONAL COAL AND ARGILLACEOUS PARTING.	10°
442.0 SHALE - BLACK, MASSIVE - HIGHLY BROKEN		0°
443.8 - 30°		30°
447.0 - 30° SHALE - BLACK, MASSIVE		25°
448.1 - 26° 449.6 SANDSTONE - ABUNDANT SHALE GRAINS		35°
454.2 WEATHERED SANDSTONE - FAULT AFTER 454.2 - NARROW BANDS - 0.1 FT OF BLACK SHALE COMMON.		30°
456.0 - 457.5 - 30° SHALE - BLACK, MASSIVE - STRONG SLICKENSIDES ON BEDDING, OCCASIONAL NARROW BAND OF COAL AND SANDSTONE		30°
463.0 SANDSTONE - ARGILLACEOUS TOWARDS BOTTOM CONTACT		30°
466.0 SHALE - BLACK, MASSIVE, SLIGHT ARENACEOUS PARTING OF COAL		39°
469.0 - 45° IRREGULAR CONTACT SANDSTONE - BLACK, ARGILLACEOUS MATERIAL ABUNDANT, PARTINGS & NARROW BANDS OF BLACK SHALE COMMON		30°
473.5 SHALE - INTERBEDDED BLACK SHALE & COAL		50°
476.0 SANDSTONE - DARK COLORED, STRONGLY ARGILLACEOUS		50°
478.6 - 30° SHALE - BLACK, MASSIVE, OCCASIONAL PARTING OF COAL		50°
485.0 ARENACEOUS PARTINGS.		50°
486.5		
489.0 - 30° & 50° CNTS - ANDESITE		

DRILL HOLE LOG

ARJAY KIRKER RESOURCES LTD
DIVISION MOUNTAIN COAL PROSPECT

COORDINATES:

DIP: -

HOLE NO 6
PAGE 2 OF 17

SHALE

LABERGE SERIES

492.8 - 70° - ORIENTATION? —

ANDESITE - PALE GREEN, APHANITIC

496.0 - CONTACT LOST —

CORE LOSS - 496.0 - 502.0 - 3.5 FT.

SANDSTONE

SHALE - BLACK, MASSIVE,
HIGHLY BROKEN, OCCASIONALLY
ARGILLACEOUS PARTINGS

507.0 SANDSTONE - DARK GREY, STRONGLY ARGILLACEOUS

508.4 - 30°

511.0 STRONGLY WEATHERED - FAULT?

512.0

512.9 - 40° SHALE - 0.4 AND STRONGLY ARGILLACEOUS
SANDSTONE

515.4 - 50°

SANDSTONE - LIGHT - DARK GREY

FINE TO COARSE GRAINED WITH

NARROW BANDS STRONGLY

ARGILLACEOUS, HIGHLY FRACTURED

520.8

522.0 SHALE - BLACK MASSIVE

SHALE - ARGILLACEOUS, LAMINATED

524.5 - 45° - CEMENTATION

SANDSTONE - GREY, MEDIUM GRAINED,
MASSIVE SANDSTONE WITH OCCASIONAL
FRAGMENTS & PARTINGS OF COAL

5422 - 35°

SHALE - ARGILLACEOUS, WEAKLY LAMINATED
2. ARGILLACEOUS FINE GRAINED
DARK SANDSTONE

5450 -

SANDSTONE - DARK, FINE GRAINED, ARGILLACEOUS

DIP

50°

45°

3°

30°

30°

DRILL HOLE LOG

ARJAY KIRKER RESOURCES LTD
DIVISION MOUNTAIN COAL PROSPECT

COORDINATES:

DIP -

HOLE NO 6
 PAGE 10 OF 17

	<u>SANDSTONE - AS PREVIOUS</u>	<u>LABERGE SERIES -</u>	DIP
554.2 - 30°	SHALE - BLACK, MASSIVE, MINOR SANDSTONE FRAGMENTS		
556.7 -		SANDSTONE - LIGHT-DARK, WEAK - MODERATELY ARGILLACEOUS SANDSTONE	
558.8 - 10° - FAULT?			
559.3 -	SHALE - BLACK, MASSIVE WITH UP TO 0.1 FT SANDSTONE FRAGMENTS		
561.0 - 0.3 FT BRECCIA	SANDSTONE FRAGMENTS IN BLACK SHALE		
563.7 - 0.3' BRECCIA	SANDSTONE FRAGMENTS IN BLACK SHALE		
565.0 -	BRECCIA ZONE - MAINLY BLACK SHALE WITH SANDSTONE FRAGMENTS AND MINOR BRECCIATED SANDSTONE		
569.5 -	BRECCIA ZONE - UP TO 0.3 FT SANDSTONE FRAGMENTS IN BLACK SHALE		
574.8 -	BRECCIA ZONE - BLACK, MASSIVE SHALE WITH OCCASIONAL SANDSTONE FRAGMENT		
576.3 -	SHALE - ALTERNATING BANDS UP TO 2 FT OF BLACK, MASSIVE AND ARENACEOUS, LAMINATED SHALE, OCCASIONAL BRECCIA FRAGMENTS TO 0.8 FT.		30°
588.6 -	SHALE - ARENACEOUS, LAMINATED		30°
590.0 -	SANDSTONE - BLACK, SHALY MATRIX		
591.8 -		SANDSTONE - LIGHT TO DARK GREY, FINE GRITTY SANDSTONE WITH IRREGULAR, MODERATELY STRONG ARGILLACEOUS SANDSTONE BANDS, OCCASIONAL PARTINGS OF COAL & SHALE, IN PLACES CRUMBLY ALONG FRACTURE	40°
			35°
			15°

DRILL HOLE LOG

ARJAY KIRKER RESOURCES LTD
DIVISION MOUNTAIN COAL PROSPECT

COORDINATES:

DIP - 30°

HOLE NO. 6
 PAGE 11 OF 17

AFTER 610.0 FT. CRITY BANDS
 BECAME COMMON.

LABERGE SERIES -

DIP

30°

30°

30

25°

635.0 - CRADATIONAL - END OF GRIT BANDS.

SANDSTONE - LIGHT TO DARK, MEDIUM TO
 COARSE GRAINED, WEAK -
 STRONGLY ARGILLACEOUS
 MODERATE FRACTURING
 COAL & BLACK SHALE PARTIAL
 LENSES COMMON OFTEN
 DEAGGED.

641.0 - GRADUALLY CHANGE TO
 STRONGLY ARGILLACEOUS
 DARK COLORED

651.0 - 10° - SHALE - MASSIVE ARENACEOUS.

655.1 - 20°? (IRREGULAR - PARALLEL BEDDING?) CHILLED CONTACT

HUTSHI GROUP - ANDESITE - PALE GREEN
 GRADUALLY DARKER IN COLOR TOWARDS CENTER,
 CHLORITE & QUARTZ - FELDSPAR FILLED
 AMYGDALAS COMMON. FAIR CARBONATE - FELDSPAR
 VEINING.

DRILL HOLE LOG

ARJAY KIRKER RESOURCES LTD
DIVISION MOUNTAIN COAL PROSPECT

COORDINATES:

DIP:

HOLE NO 6
PAGE 12 OF 17

HUTSHI GROUP - ANDESITE

DIP

688.7 - 60° - SHALE - BLACK MASSIVE
689.5 - 86° -

693.3 - 0.3' SHALE - BLACK MASSIVE

706.0 - 80° CHILLED CONTACT -

707.0 - SHALE - BLACK MASSIVE, SLIGHT ARENACEOUS
BRECCIA - 0.6 FT - FAULT?

SANDSTONE - COARSE GRAINED - GRITTY
STRONGLY WEATHERED

LABERGE SERIES

712.0 - 45° - SHALE - BLACK, MASSIVE, PARTINGS OF COAL
ARENACEOUS AT UPPER CONTACT.

716.0 - SANDSTONE

717.7 - SHALE - ARENACEOUS, WEAKLY LAMINATED, MINOR, MASSIVE

719.5 - 50° - SHALE - BLACK, MASSIVE, NUMEROUS PARTINGS OF COAL
720.4 - 50° -

COAL - BLACK

722.6 - 40° - SANDSTONE - GREY, GRITTY, OCCASIONAL
PARTING OF COAL, GRAINS TO 1/4 INCH

55°

50°

DRILL HOLE LOG

ARJAY KIRKER RESOURCES LTD
DIVISION MOUNTAIN COAL PROSPECT

COORDINATES

DIP -

HOLE NO 6
PAGE 13 OF 17

LABERGE SERIES

742.0 - 50° 0.5 SHALE - ARENACEOUS, LAMINATED

745.0 - 50° SHALE - MASSIVE, SLIGHT ARENACEOUS

746.0 -

747.7 - 50° GRADATIONAL

748.6 - FAULT - SHALE - BLACK, MASSIVE & ARENACEOUS

SANDSTONE - LIGHT-MEDIUM GREY, MODERATELY
ARGILLACEOUS, OCCASIONAL PARTING OF COAL.

753.5 - 30° SUCKENSIDE

754.6 - 60° SHALE

756.0 - 20° SUCKENSIDE - 0.7 SHALE

762.0 - 60°

SHALE - ARENACEOUS, LAMINATED, STRONG
SUCKENSIDES

764.0 -

767.0 -

SHALE - ARENACEOUS, SLIGHTLY LAMINATED

770.0 - 50°

772.0 - 50° SHALE - STRONG ARENACEOUS

773.0 -

781.0 - 70°

SHALE - BLACK MASSIVE

782.0 -

SHALE - ARENACEOUS, LAMINATED

783.4 - 60°

789.5

SHALE - ARENACEOUS, WEAKLY LAMINATED

790.1 - 60°

DIP

50°

45°

50°

30°

45°

55°

DRILL HOLE LOG

ARJAY KIRKER RESOURCES LTD
DIVISION MOUNTAIN COAL PROSPECT

COORDINATES:

DIP:

HOLE NO 6
 PAGE 14 OF 17

	LABERGE SERIES	DIP
790.5	SHALE - BLACK MASSIVE, COAL PARTINGS	
791.4	COAL - SHALE PARTING COMMON	
793.2-70°	SHALE - ALTERNATING BANDS TO 1 FT OF BLACK MASSIVE SHALE WITH COAL PARTINGS & BANDS TO .2 FT AND ARENACEOUS, WEAKLY LAMINATED	
799.7-70°	SANDSTONE	
801.4-55°	COAL	
804.5-55°	SHALE - BLACK-GREY, MASSIVE, HIGHLY BROKEN	
808.0-65°	SHALE - STRONGLY ARENACEOUS, LAMINATED, BANDS OF FINE GRAINED SANDSTONE	65°
810.7-65°	GRADATIONAL SANDSTONE - FINE GRAIN, IRREGULAR NARROW ARGILLACEOUS BANDS PARTINGS OF COAL	
813.0-70°	SHALE - MASSIVE, ARENACEOUS, 0.5 FT BLACK SHALE WITH COAL PARTINGS ON BOTTOM CONTACT	
815.0	SANDSTONE - GREY, COARSE GRAINED-GRITTY WITH PARTINGS OF BLACK, ARENACEOUS SHALE	
821.8-30°	SHALE - MASSIVE ARENACEOUS	50°
826.8-30°	SHALE - ARENACEOUS, LAMINATED	50°
829.1-50°	SHALE - BLACK, MASSIVE	
837.4	SANDSTONE - WEAK - STRONGLY ARGILLACEOUS	50°
838.4	SHALE - BLACK, MASSIVE OCCASIONALLY ARENACEOUS MINOR COAL PARTINGS	
841.8	COAL	
843.3	SANDSTONE - WEAK TO STRONGLY ARGILLACEOUS	
844.5	SHALE - BLACK, MASSIVE & ARENACEOUS	
845.3-60°	SANDSTONE & SHALE - BLACK, MASSIVE & ARENACEOUS LAMINATED	
847.2	SANDSTONE	65°
849.0	SHALE - BLACK MASSIVE	

DRILL HOLE LOG

ARJAY KIRKER RESOURCES LTD
DIVISION MOUNTAIN COAL PROSPECT

COORDINATES:

DIP: -

HOLE NO 6
 PAGE 5 OF 17

LABERGE SERIES

850.5 COAL - 0.5 FT

SANDSTONE - DARK, STRONGLY ARGILLACEOUS

GRADING INTO ARGILLACEOUS SHALE, MINOR COAL PARTINGS
 IN PLACES

853.3 - 50°

SANDSTONE - ARGILLACEOUS BANDS TOWARDS
 BOTTOM CONTACT

856.8 - 60°

SHALE - ARGILLACEOUS, WEAKLY LAMINATED WITH
 NARROW BANDS OF BLACK MASSIVE

860.8 - - - - -

COAL - SHALE PARTING & NARROW BANDS COMMON

862.8 - - - - -

SHALE - BLACK MASSIVE WITH COAL PARTINGS

863.7 - - - - -

COAL
SANDSTONE - 0.4 FT

864.3 - - - - -

COAL

866.0 - - - - -

SHALE - ARGILLACEOUS

867.0 - - - - -

COAL - BANDS OF BLACK MASSIVE SHALE UP TO 0.2 FT COMMON

870.3 - 60°

SHALE - LIGHT COLORED, ARGILLACEOUS, FINE GRAINED
 SANDSTONE LAMINATED ARGILLACEOUS SHALE

880.0 - - - - -

COAL PARTING BECOME COMMON

882.1 - - - - -

SANDSTONE - STRONGLY ARGILLACEOUS, DARK, GRADING
 INTO LIGHT COLORED, MEDIUM-COARSE
 GRAINED

884.8 - 66 FT

SHALE - BLACK MASSIVE

70°

886.5 - 70°

SHALE - DARK MASSIVE, WEAK-MODERATELY
 ARGILLACEOUS, COAL PARTINGS COMMON

891.5 - 70°

COAL

SANDSTONE - GREY TO LIGHT, MEDIUM FINE GRAINED TO
 MEDIUM, INTERLAMINATED ARGILLACEOUS

894.8 - 80 FT

SHALE - 80 FT

901.4 - - - - -

SHALE - LIGHT TO DARK COLORED, INTERLAMINATED, ARGILLACEOUS
 FINE GRAINED SANDSTONE LAMINATED ARGILLACEOUS SHALE AND
 LAMINATED ARGILLACEOUS SHALE

DIP

60°

65°

65°

55°

70°

70°

70°

65°

65°

DRILL HOLE LOG

ARJAY KIRKER RESOURCES LTD
DIVISION MOUNTAIN COAL PROSPECT

COORDINATES:

DIP:-

HOLE NO 6
PAGE 16 OF 17

LABERGE SERIES

912.4-70°

SANDSTONE - GREY, OCCASIONAL
NARROW, ARGILLACEOUS
BANDS

915.3-45°

926.3-65°

SANDSTONE - COAL & BLACK SHALE PARTINGS
COMMON

927.8-55°

928.5-

COAL

SHALE - BLACK, MASSIVE, SLIGHTLY ARENACEOUS
MINOR, NARROW COAL BANDS

SANDSTONE - GREY TO LIGHT BROWN

MODERATELY ARGILLACEOUS, FINE -
MEDIUM GRAY SANDSTONE WITH
IRREGULAR, NARROW ARGILLACEOUS
BANDS & PARTINGS COAL PARTINGS
& LENSES COMMON

933.5-50°

SANDSTONE

934.0-40°

SHALE - BLACK MASSIVE WITH COAL PARTINGS GRADING INTO
ARENACEOUS LAMINATED

935.1-50°

937.0-70°

SHALE - BLACK, MASSIVE, SLIGHTLY ARENACEOUS, NARROW
BANDS OF COAL

938.3-55°

941.0-70°

SHALE - BLACK MASSIVE WITH COAL PARTINGS
& ARENACEOUS, LAMINATED

944.4-60°

946.1-55°

SHALE - BLACK MASSIVE WITH 0.2 FT COAL BAND

946.7-45°

948.6-

SHALE - LAMINATED, SLIGHTLY ARENACEOUS, MINOR COAL PARTINGS

948.6-60°

SHALE - BLACK, MASSIVE, SLIGHTLY ARENACEOUS LAMINATED

957.0-70°

959.8-

SHALE - 0.4 FT BLACK, MASSIVE

961.6-60°

SHALE - LIGHT COLORED, STRONGLY ARENACEOUS
LAMINATED, MINOR BLACK SHALE WITH
COAL PARTINGS

965.0-60°

966.4-70°

SHALE - BLACK MASSIVE - 0.3 FT COAL ON UPPER CONTACT

967.5-70°

968.2-

SHALE - ARENACEOUS, LAMINATED

DIP

70°

65°

70°

55°

55°

60°

55°

65°

60°

60°

DRILL HOLE LOG

ARJAY KIRKER RESOURCES LTD
DIVISION MOUNTAIN COAL PROSPECT

COORDINATES:

DIP:

HOLE NO 6
 PAGE 17 OF 17

		DIP
907.2 - 75°	<u>SHALE</u>	
	<u>LABERGE SERIES</u>	
912.8 - 70°	<u>SHALE</u> - ARENACEOUS, WEAKLY LAMINATED	75°
914.1 - 65°		
918.5 - 70°	BLACK, MASSIVE, COAL PARTINGS	70°
919.0 -		
921.5 - 70°	<u>SHALE</u> - BLACK, MASSIVE WITH COAL PARTINGS GRADING INTO ARENACEOUS LAMINATED	65°
924.1 - 70°		
926.3 - 65°	<u>SHALE</u> - ARENACEOUS, WEAKLY LAMINATED	70°
929.8 -		
931.2 - 70°	<u>SHALE</u> - 0.3 FT	70°
933.6 -	<u>SHALE</u> - BLACK, SLIGHTLY ARENACEOUS WITH BANDS OF ARGILLACEOUS FINE GRAINED	
935.8 -	<u>GREY SANDSTONE</u> , MINOR PARTINGS OF COAL	
938.3 - 70°	<u>SHALE</u> - BLACK, MASSIVE WITH BANDS GRADATION MASSIVE TO WEAKLY LAMINATED ARENACEOUS	70°
1005 -	END OF HOLE	